The image features a white background with a diagonal split. The top-left portion is white, and the bottom-right portion is a vibrant blue. A diagonal line separates these two colors. In the bottom-left corner, there is a triangular area of orange. The text 'ECAMPUS STUDENT SURVEY' is written in a bold, black, sans-serif font, slanted upwards from left to right, positioned in the white area. Below it, the year '2011' is written in the same font style, also slanted and positioned to the left of the main title.

ECAMPUS STUDENT SURVEY
2011

SURVEY DETAILS

Total Surveys Sent:	8922
Total Respondents:	1691
Response Percentage	19%
Total Completed:	1631
Completion Percentage	96.45%

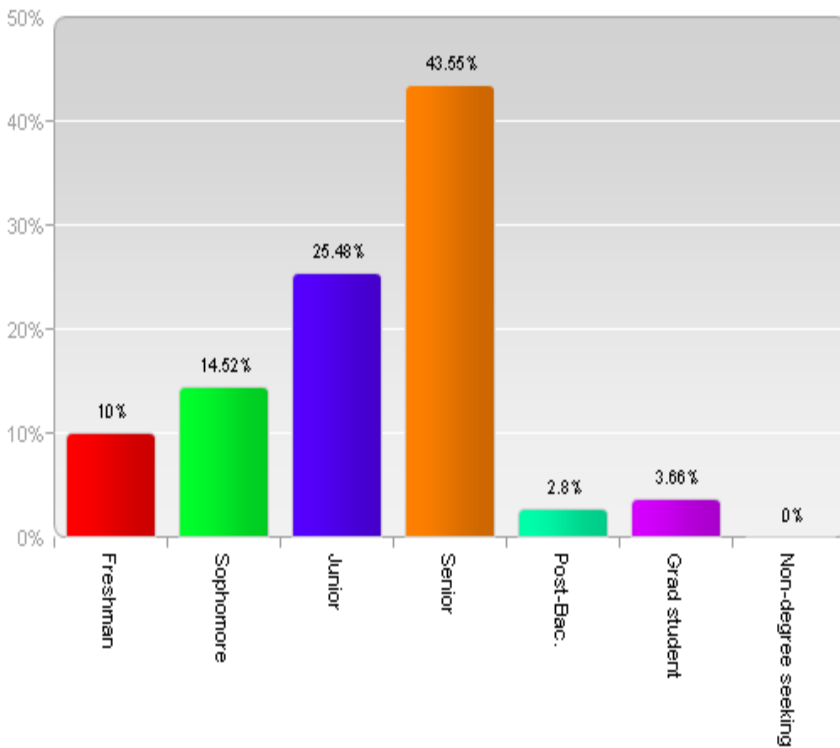
Ecampus Completion:	666	41%
Campus Completion:	931	57%
Non Degree/Grad/Cascades	34	2%



YEAR IN SCHOOL COMPARISON

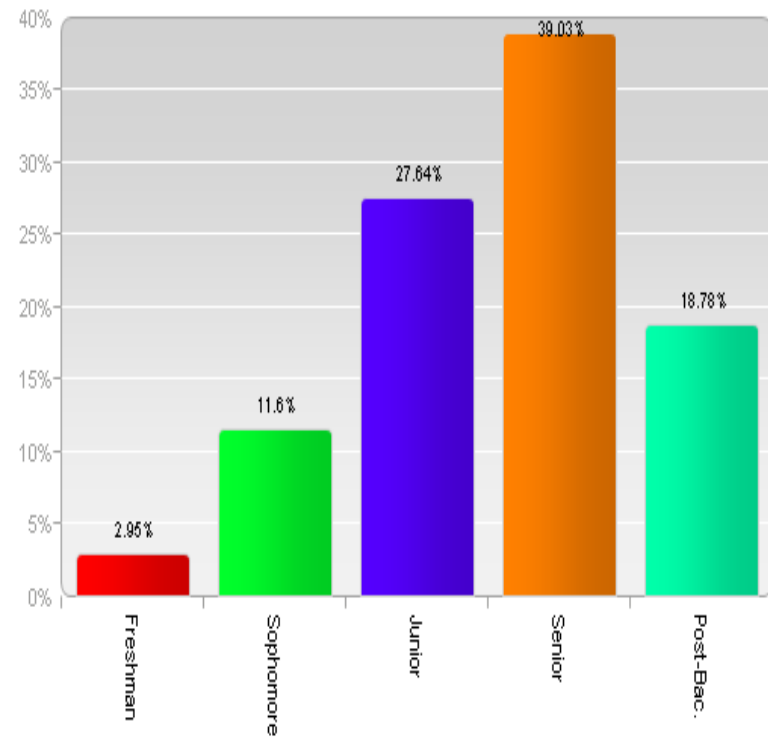
Campus

Q1. Year in school:



Ecampus

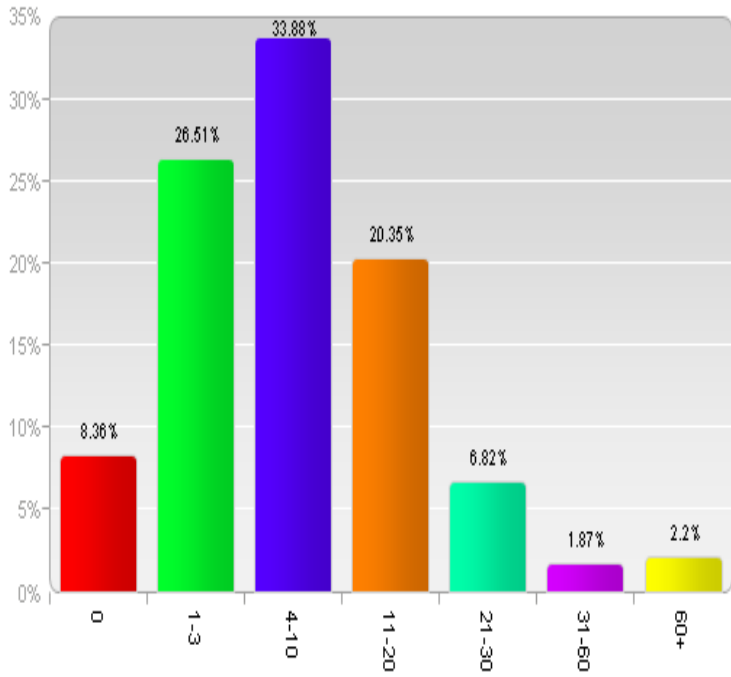
Q1. Year in school:



NUMBER OF CREDITS COMPLETED THROUGH ECAMPUS

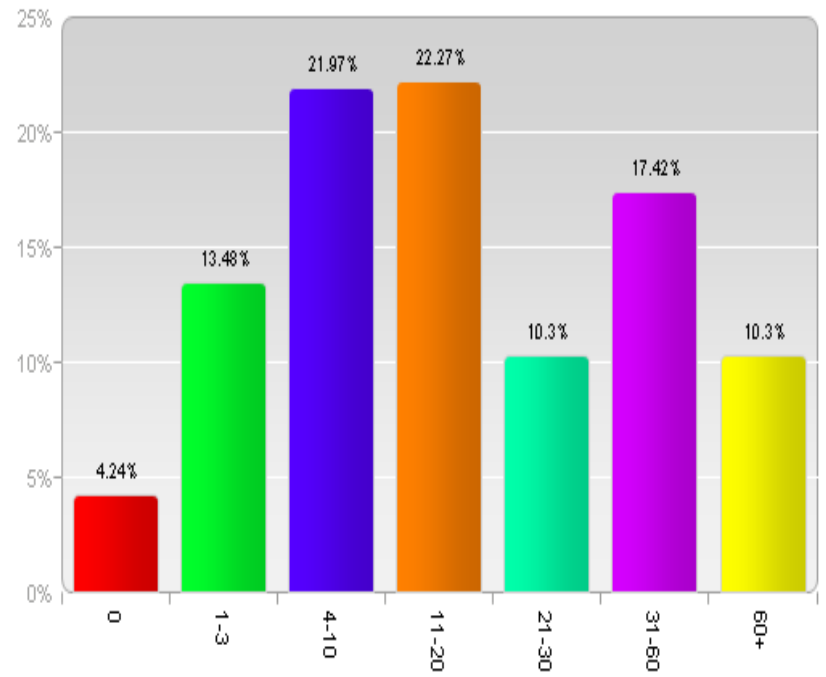
Campus

Q6. How many course credits have you completed through OSU Ecampus throughout your college experience?



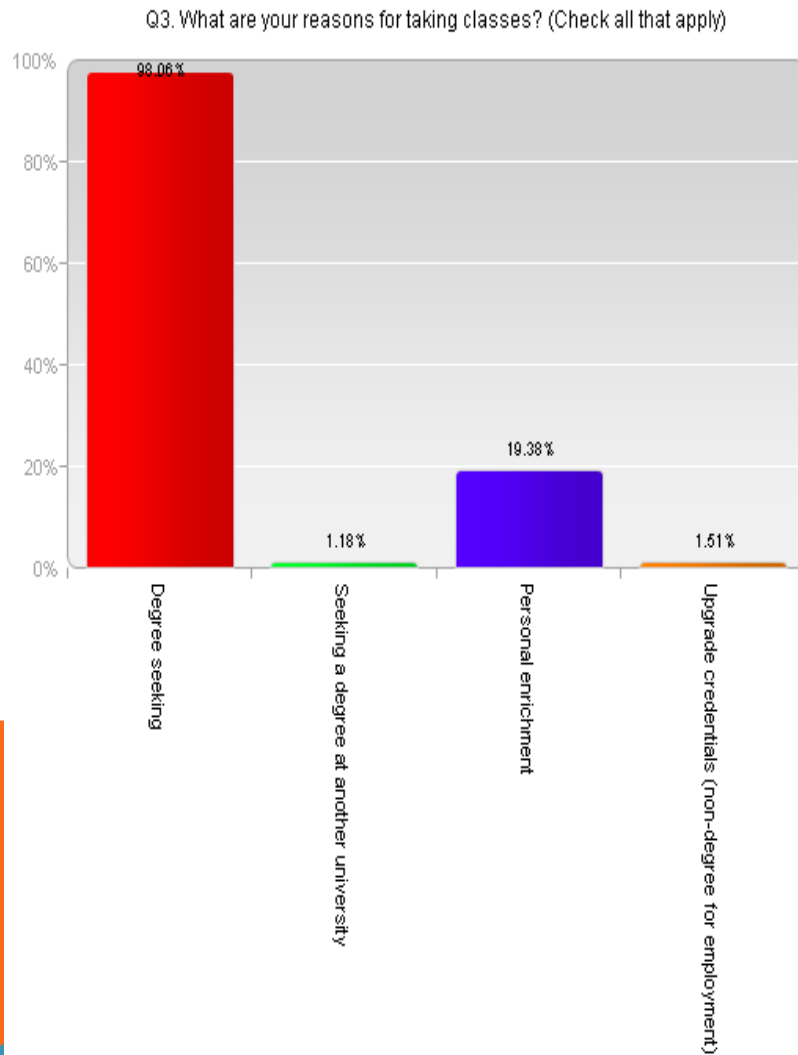
Ecampus

Q6. How many course credits have you completed through OSU Ecampus throughout your college experience?

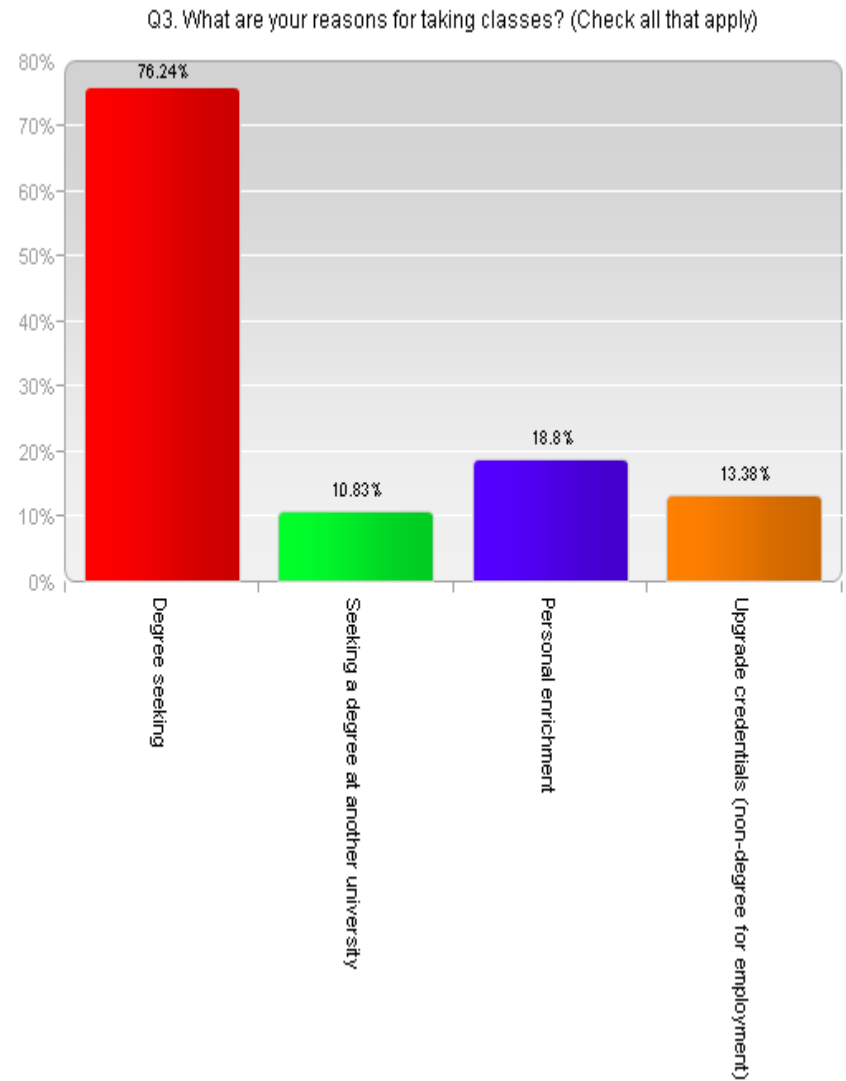


REASON FOR TAKING CLASSES

Campus



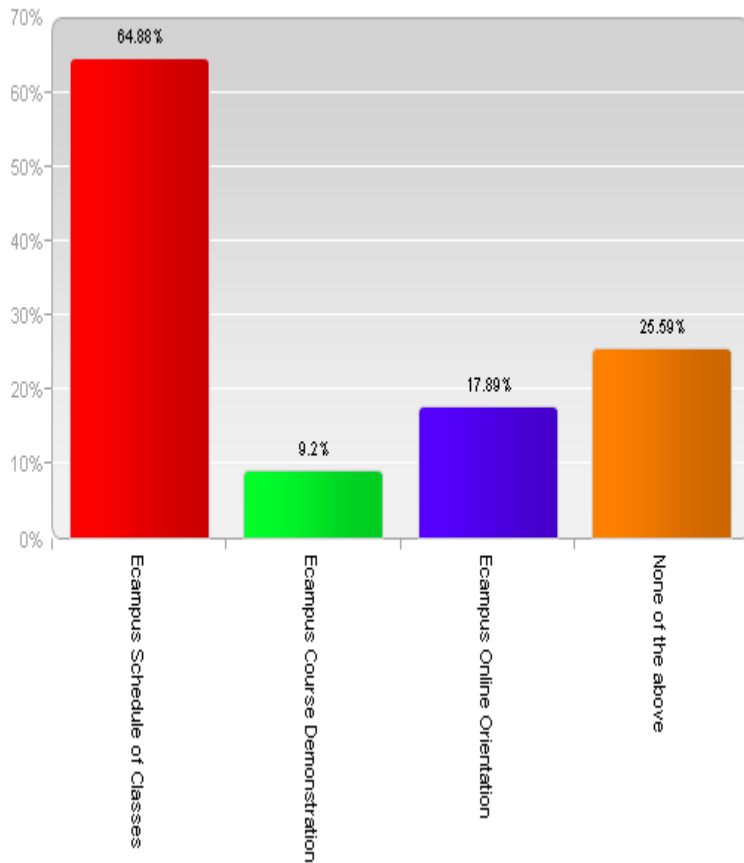
Ecampus



ECAMPUS TOOLS USED

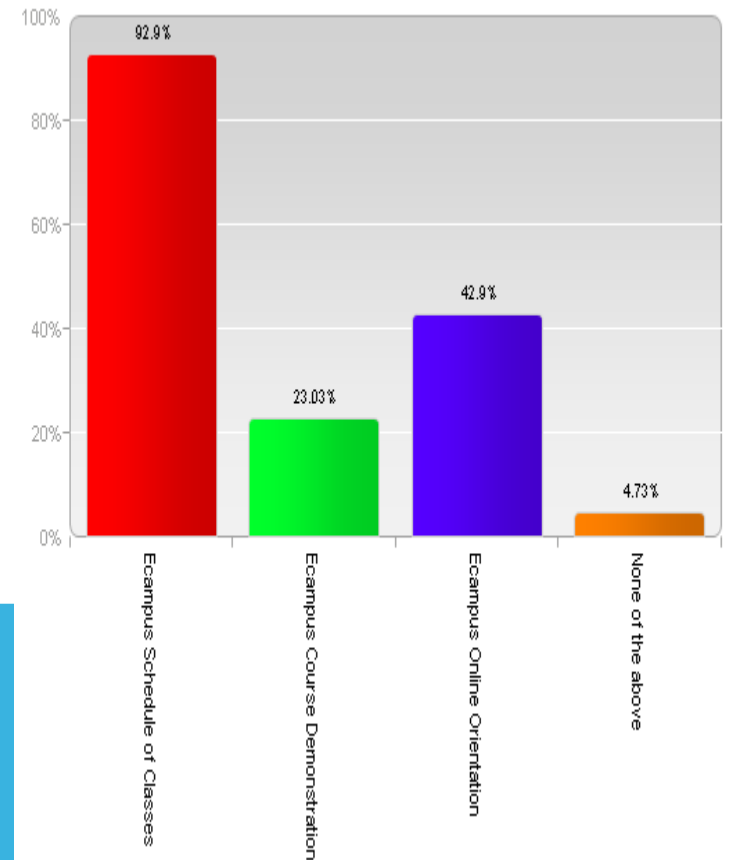
Campus

Q14. Which of the following Ecampus website tools have you used? (Check all that apply)



Ecampus

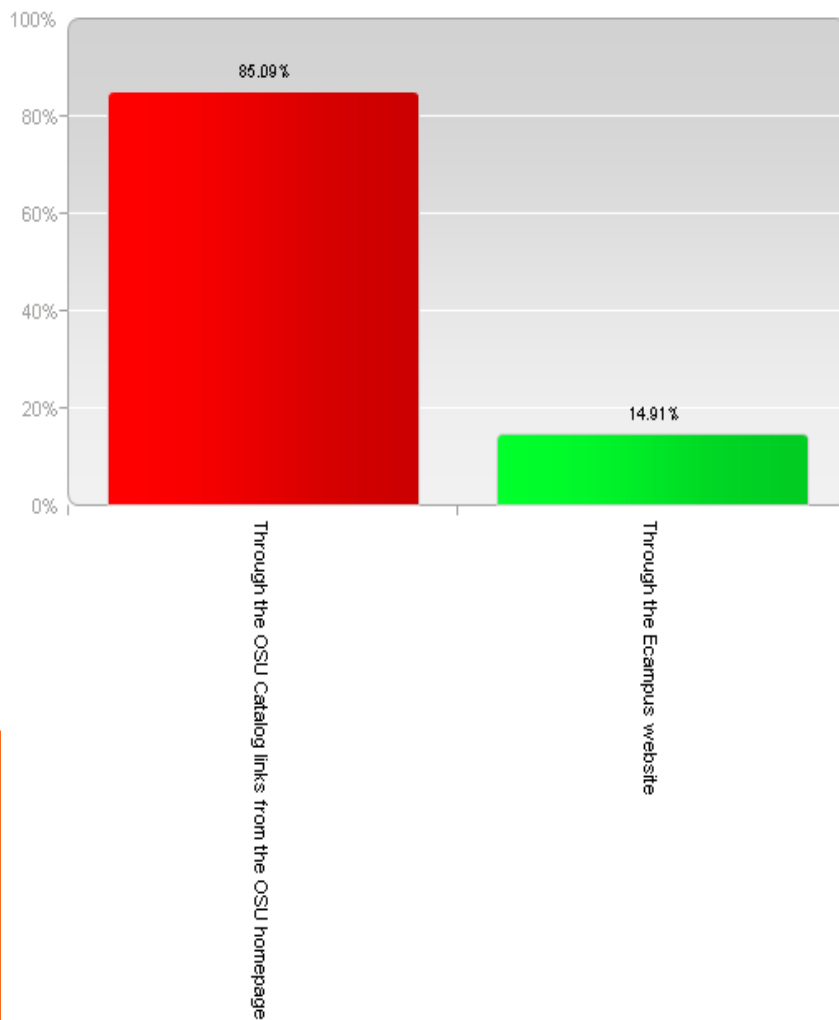
Q14. Which of the following Ecampus website tools have you used? (Check all that apply)



VIEWING SCHEDULE OF CLASSES

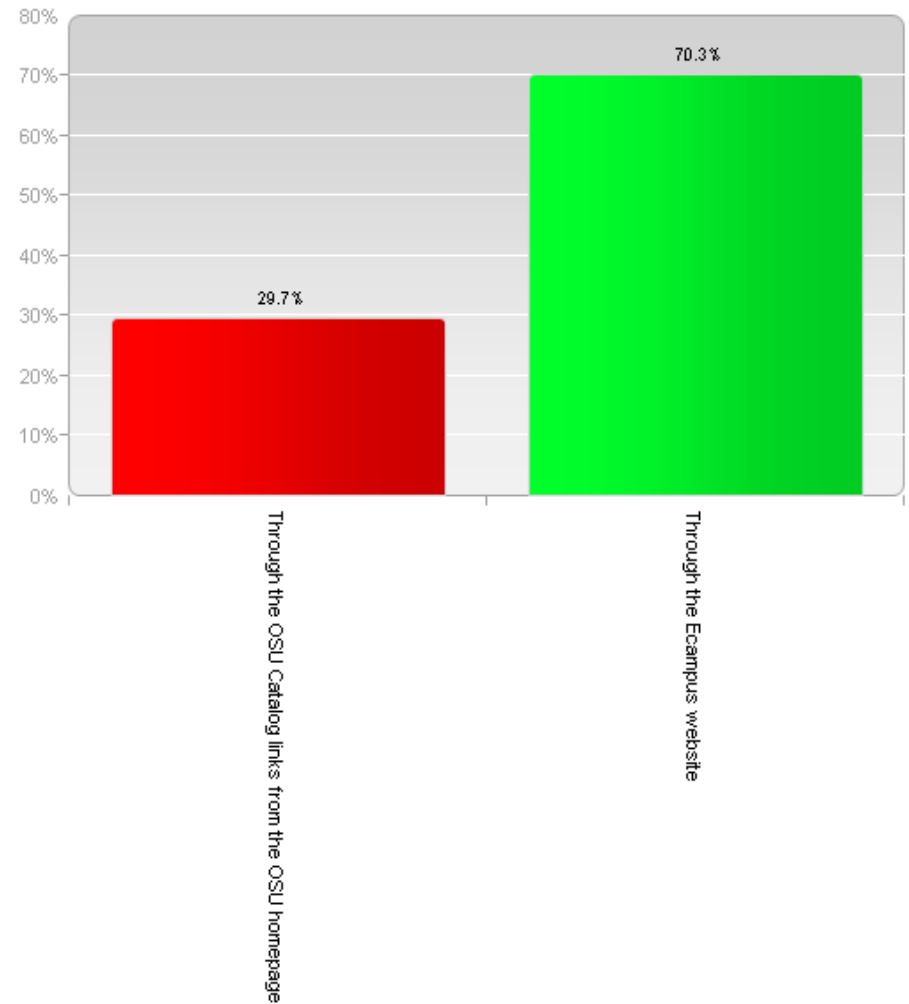
Campus

Q15. When looking at the Schedule of Classes, how do you view it?



Ecampus

Q15. When looking at the Schedule of Classes, how do you view it?



FAVORITE COURSES – TOP 22

ANTH 210

BI 370

CH 121

CSS 205

CSS 335

FR 111

FW 251

FW 323

FW 325

FW 340

FW 350

FW 360

HDFS 240

HSTS 417

MUS 102

MUS 103

MUS 108

PHL 443

PSY 381

RNG 455

RNG 490

264 distinct courses listed as favorites
All above had 5 or more votes

SELECTED COMMENTS

A clearer academic calendar with deadlines

Easier Website Interface – sometimes difficult to find
Ecampus webpages and resources

Easier access from Ecampus Webpage to Online
Services

More sample syllabi

Library tutorial should be required before taking
Ecampus classes



SELECTED COMMENTS (CONTINUED)

Instructor pictures and bios

Concerns unique to distance learners webpage

Term to Semester comparison

Social connection to other distance students

**Description of type of resources provided for courses
(video lectures vs. notes and book assignments)(in-
course syllabi)**



SELECTED COMMENTS (CONTINUED)

Information about low bandwidth options for military deployed (streaming videos)

Faculty interaction key to course success

Faculty video lectures aid in learning and improve course materials

Faculty involved in online discussions is vital!

Blackboard discussion boards too heavily weighted in grading

Blackboard not utilized to full extend with most courses

Well stated calendar a must for courses (university and course deadlines)



SELECTED COMMENTS (CONTINUED)

Timely response to emails from faculty

Longer hours for help desk (IT support)

**Career services assistance would be helpful for students
outside Oregon**

Online WIC courses hard to find

**Why are Ecampus courses more expensive than campus
based courses?**

Need for a response back from Financial Aid



RECOMMENDATIONS

Development of a printed calendar similar to the New Student Programs calendar that can be sent to new students (web calendar can be sent to continuing students)

Current Student Webpage retooled with resources needed for student success
(pages specific to different populations, such as military)

Tips and advice page from current students (short videos, how to's, "what if's") – Knowledge base; academic success coaching

RECOMMENDATIONS (CONTINUED)

Creation of an updated faculty bios page

Investigate extending IT Support hours

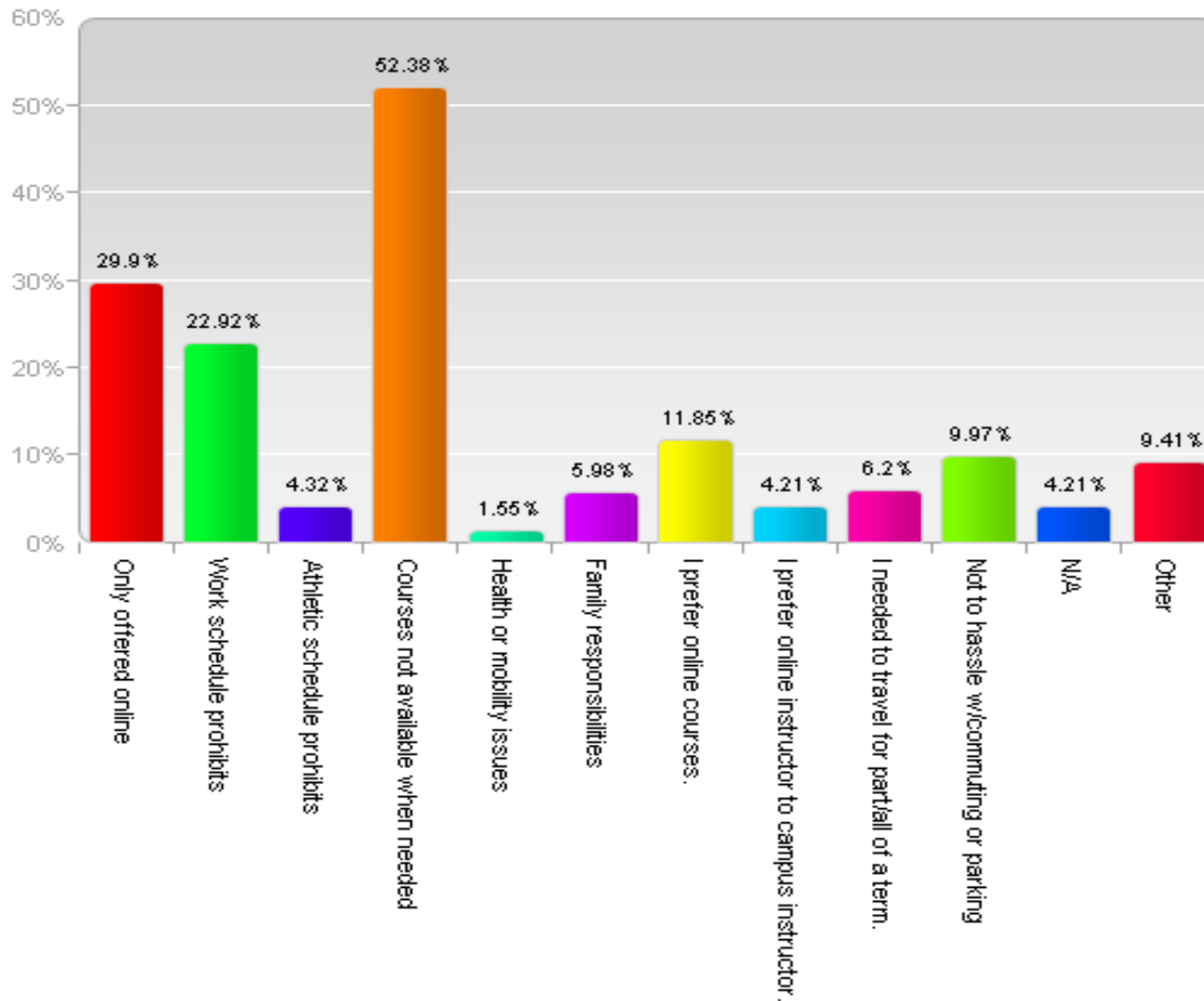
Explanation of course costs (Campus vs. Ecampus) on webpage (why vs. what).

Ecampus contact for Financial Aid needed.



REASONS FOR TAKING ECAMPUS COURSES (CAMPUS STUDENTS)

Q8. If you live within driving distance of the OSU Corvallis campus, why do you take OSU online courses? (Check all that apply)



REASONS FOR TAKING ONLINE COURSES

(CAMPUS STUDENTS WITHIN 15 MILES OF CAMPUS)

Campus Students

